



Weelsby Way, Hessle, HU13

£349,950



 4  1  2  D Band: D

- 'Art Deco' Semi-Detached House
- Beautifully Presented
- Four Bedrooms
- Two Reception Rooms
- Gas Central Heating
- Attractive South-West-Facing Garden
- Private Driveway & Garage
- Popular & Convenient Hessle Location





This beautifully presented 'Art Deco' house, which retains its original 'Crittall' curved windows to the front bays, is situated in a highly popular cul-de-sac off Boothferry Road between Heads Lane and the Humber Bridge roundabout, so it's within easy reach of Hessle, Anlaby, Hull, Beverley, the Humber Bridge itself, and the A63/M62 corridor. The house itself is set out over two floors. The ground floor comprises an entrance hall, WC, dining room, lounge, and breakfast kitchen. The first floor comprises a landing, four bedrooms, and a bathroom. To the front of the property is a private driveway leading to a single garage at the end of the side drive, whilst to the rear of the property is an attractive, fully enclosed, south-west-facing garden. This is a fabulous property in a popular and highly convenient location, so check out the video tour and contact Hudson's to book your viewing!

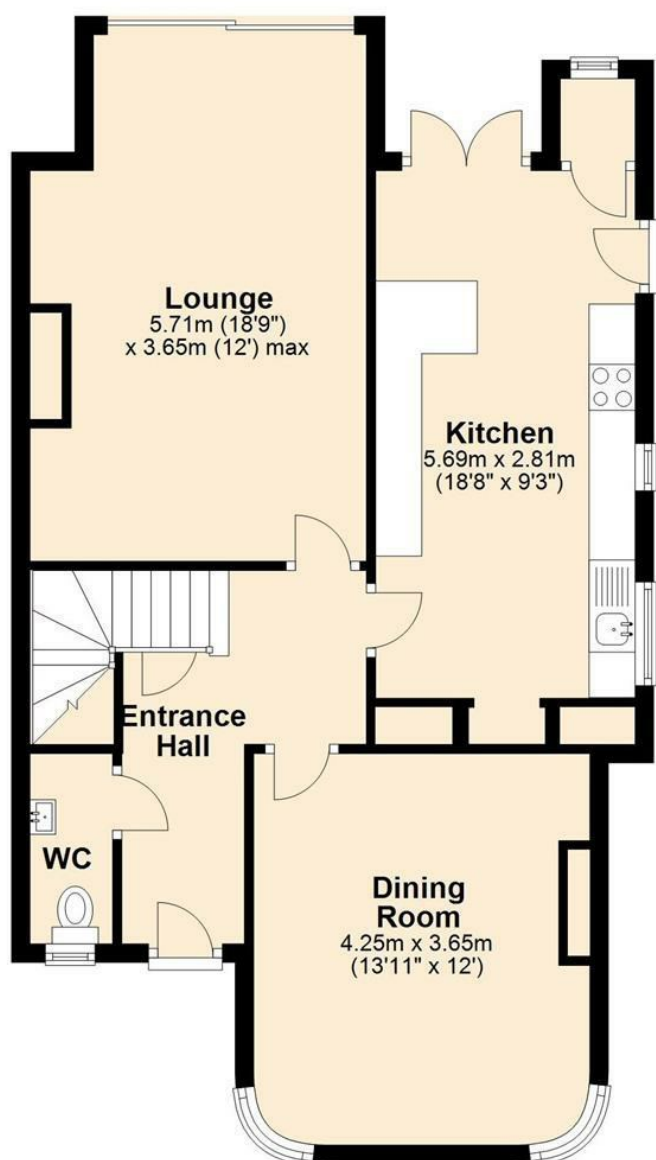


FIXTURES & FITTINGS: All carpets, curtains, blinds and light fittings are included in the sale. **TENURE:** The tenure of this property is freehold. **OTHER INFORMATION:** We believe the original house to be of solid wall construction, and to be connected to mains gas, electricity, water, and drainage, and to both landline telephone and Internet broadband.

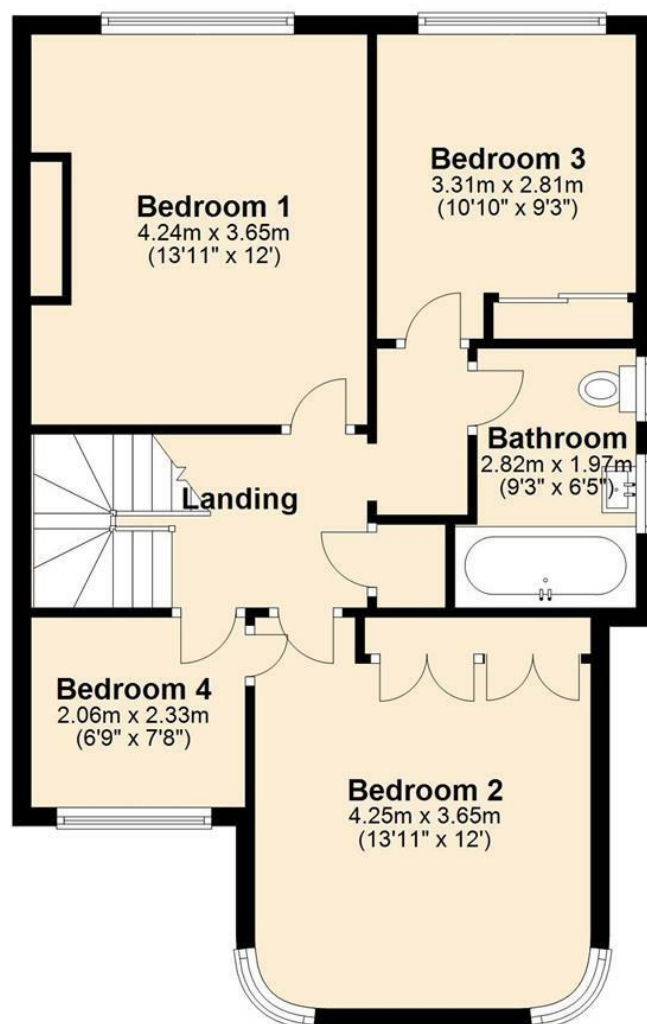




Ground Floor



First Floor



MEASUREMENTS: Please note that all measurements are approximate. **STAMP DUTY:** Many property purchases are subject to Stamp Duty Land Tax, and the rules governing stamp duty and the levies imposed are complex. HM Revenue & Customs have an online calculator to assist you in calculating your stamp duty liability (<https://www.gov.uk/stamp-duty-land-tax>) but please always check with your solicitor. **COPYRIGHT:** All photographs and images are the exclusive property of Hudson Property Angels Limited and are protected by copyright law. The images may not be reproduced, copied, transmitted or manipulated without the written consent of a director of Hudson Property Angels Limited.